

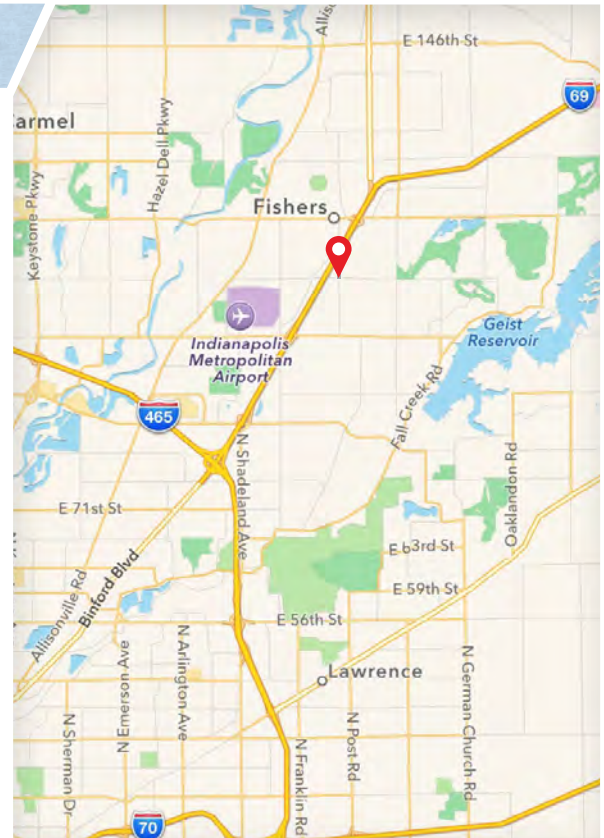
EXIT FIVE CORPORATE PARK // FISHERS, IN

NEC Lantern Road & E. 106th Street, Fishers, IN 46037



+/- 6.7 ACRE PARCEL AVAILABLE

- Located at intersection of Lantern road and East 106th street in the heart of Fisher's Exit Five Corporate Park with easy access to Interstate 69.
- Daytime population of 89,909 within a five mile radius.
- Major employers include Roche Diagnostics, Sallie Mae, US Foodservice, Wiley & Sons Publishing, Schwab Services and Universal Music Group.
- Fishers ranked eighth in the best places to live, according to Money magazine, and America's best affordable suburb by Business Week.



TRAFFIC COUNTS

E. 106th Street - 11,404 ADT
Interstate 69 - 108,218 ADT

DEMOGRAPHICS	3 Miles	5 Miles	7 Miles
Population	56,744	159,695	290,012
Households	23,260	63,353	116,170
Median HH Income	\$84,512	\$87,509	\$80,835
Active Businesses	2,601	6,698	12,698



Owned by Sunbeam Development • Leased by ECHO Retail & Eclipse
 Paul Gold / www.echoretail.com 317.218.8101 / pgold@echoretail.com
 Bryan Chandler / www.eclipsere.com 317.614.9402 / bchandler@eclipsere.com

EXIT FIVE CORPORATE PARK // FISHERS, IN

NEC Lantern Road & E. 106th Street, Fishers, IN 4603

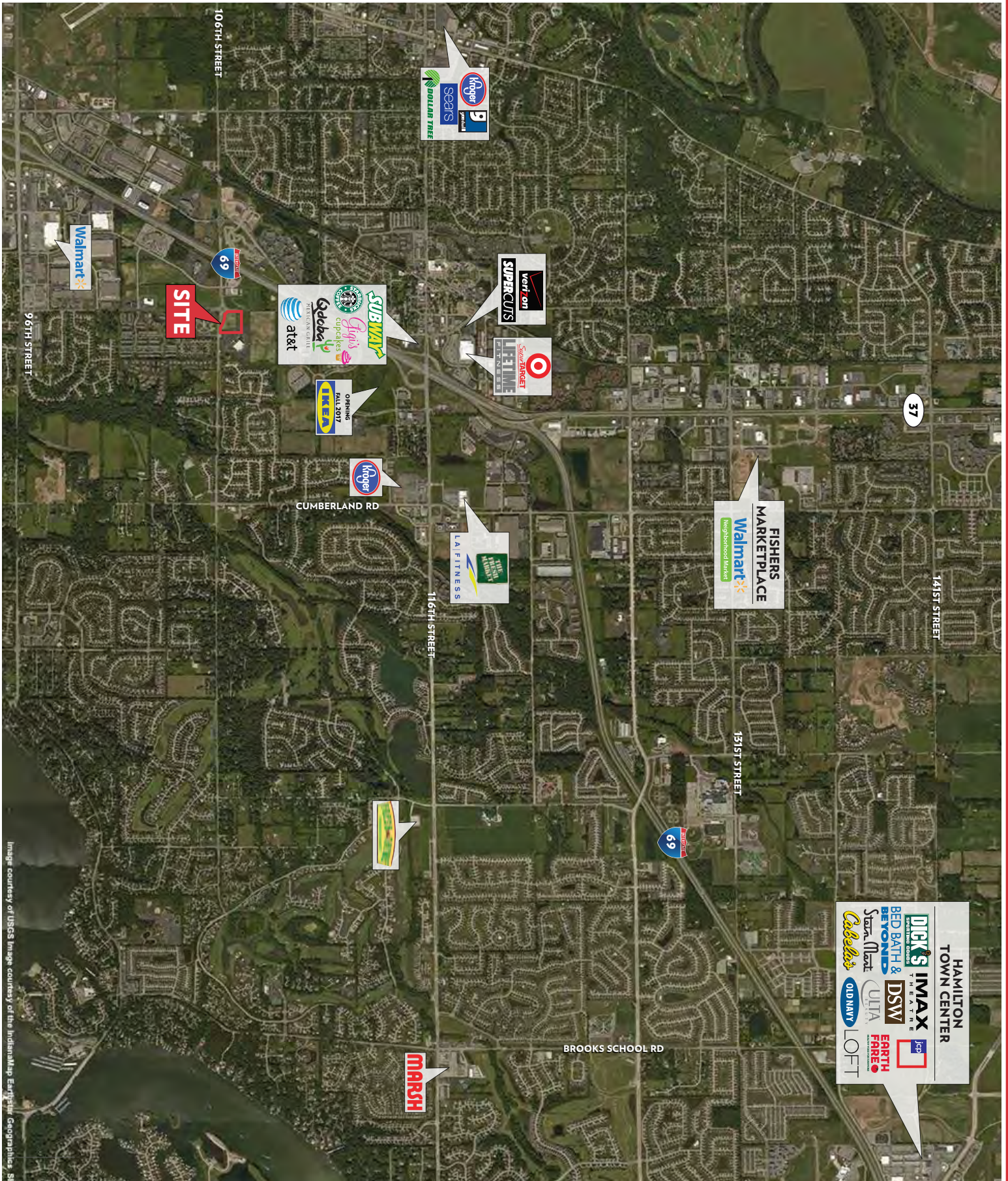


Image courtesy of USGS Image courtesy of the IndianaMap, Earthstar Geographics, SA